

Corin



## Size

	S	M	L
Chest	38"	42"	44"
Length	25"	26"	27"

## Yarn

Berrocco Ultra Alpaca Worsted [50% Alpaca 50% Wool] x5 [6,7] 100g (215 yards) Skeins

### Gauge

4" x 4" = 16 sts x 25 rows

### Recommend Needle Size

US Size 08 Circular Needles in 24" and 16"

### Notions

- Darning Needle
- Cable Needle
- Waste yarn/stitch holder

### Cable Pattern

*Rows 1-2:* K9 on RS/p9 on WS

*Row 3:* C6B, k3.

*Rows 4-6:* Repeat *Rows 1-2*.

*Row 7:* K3, c6f.

*Row 8:* Repeat *Rows 1-2*.

## Directions

### Back

CO 96 [104, 108] sts.

*Row 1:* K2, p2 until end of row.

Repeat *Row 1* until piece measures 2 inches and inc 1 st on last row to make 97 [105, 109] sts.

*Row 1:* K21 [25, 27], p2, cable pattern (9), p2, cabled argyle (29), P2, cable pattern (9), p2, k21 [25, 27].

Repeat *Row 1* until piece measures 17 [17, 17.5] inches.

### Raglan Shaping

BO 4 sts at the beg of next 2 rows starting on RS. 93 [101, 105] sts remain.

*Row 1:* K2, ssk, work even until the last 4 sts, k2tog, k2. 91 [99, 103] sts remain.

*Row 2:* Work even.

Repeat the *rows 1-2* 23 [27, 29] more times. 45 [45, 45] sts remain.

BO all sts.

## **Front**

CO 96 [104, 108] sts.

*Row 1:* K2, p2 until end of row.

Repeat *Row 1* until piece measures 2 inches and inc 1 st on last row to make 97 [105, 109] sts.

*Row 1:* K21 [25, 27], p2, cable pattern (9), p2, cabled argyle (29), P2, cable pattern (9), p2, k21 [25, 27].

Repeat *Row 1* until piece measures 17 [17, 17.5] inches.



## Raglan Shaping

BO 4 sts at the beg of next 2 rows starting on RS. 93 [101, 105] sts remain.

*Row 1:* K2, ssk, work even until the last 4 sts, k2tog, k2. 91 [99, 103] sts remain.

*Row 2:* Work even.

Repeat the *rows 1-2* 13 [17, 19] more times. 65 [65, 65] sts remain.

## Collar Shaping

*Row 1:* Work 20 sts in decrease patt as set, k2tog, k2, set aside remaining sts on holder. 22 sts remain.

*Row 2:* Work even.

Continue to dec 2 sts every other row in this way until 1 st remains.

Take remaining sts off of holder.

*Next row:* BO 21 sts, k2, ssk, work even until last 4 sts, k2tog, k2.

Continue to dec 2 sts every other row until 1 st remains.

## Sleeve

CO 32 [36, 40] sts.

*Row 1:* K2, p2 until end of row.

Repeat *Row 1* until piece measures 2 inches and inc 7 sts on last row to make 39 [43, 47] sts.

*Row 1:* K13 [17, 21], p2, cable pattern (9), p2, k13 [17, 21].

*Row 2:* Work even.



*Row 3:* K2, inc 1 st, work even until last 4 sts, inc 1 st, k2. There are now 34 [38, 42] sts.

Work the next 7 [7, 5] rows even.

Repeat the last 8 [8, 6] rows 9 [12, 0] more time(s). There are now 52 [62, 42] sts.

*Next Row [S and L sizes only]:* K2, inc 1 st, work even until last 4 sts, inc 1 st, k2. There are now 54 [62, 44] sts.

Work the next 9 [0, 7] rows even.

Repeat the last 10 [0, 8] rows 1 [0, 12] more times. There are now 56 [62, 68] sts.

BO all sts.

### **Raglan Shaping**

BO 4 [5, 6] sts at the beginning of the next 2 rows. 58 [62, 66] sts remain.

*Row 1:* K2, ssk, work even until the last 4 sts, k2tog, k2. 54 [58, 62] sts remain.

*Row 2:* Work even.

Repeat the *rows 1-2* 23 [27, 29] more times. 8 [12, 16] sts remain.

BO all sts.

### **Finishing**

Seam raglans together.

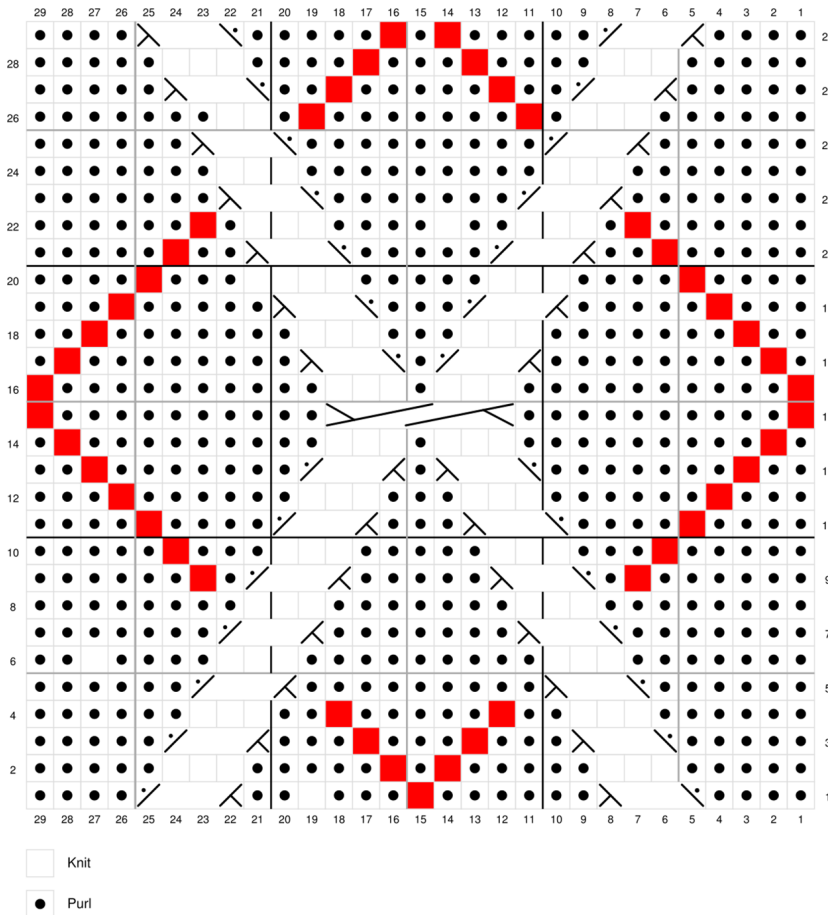
PU sts around back, shoulders and front with circular needle, join and begin working in k2, p2 ribbing for 1 inch then BO all sts.

Seam sides and sleeves together.

Weave in any loose ends.

# Charts

## Cabled Argyle Pattern



**Note:** Knit sts for argyle are shown in red for visibility

## Cable Pattern

